



Zoe Scarf

Designed by Jill Szalaj

jill@colornotesyarn.com

www.colornotesyarn.com

An easy two-skein knitted scarf with a lacy leaf pattern stitch worked in worsted weight yarn.

Skill Type: Knitting

Skill Level: Easy

Skills Needed: Knit, purl, yarn over, right leaning decrease (k2tog), left leaning decrease (ssk).

Finished Measurements (inches)

66" long by 9" wide

Materials

- Color Notes Yarn Pure Worsted (100g, 218 yds, 100% Merino NSW) [CYCA 4], 2 skeins.
- U.S. 7 [4.5 mm] 24" circular or straight needles
- Stitch markers or scrap yarn
- Tapestry needle

Gauge is not critical for this project.

Pattern Notes

- Pattern stitch creates a wavy edge along the long edges of the scarf
- Design includes a 2-stitch garter edge, worked by knitting the first two and last two stitches of every row

INSTRUCTIONS

Using U.S. 7 needle, cast on 43 stitches using a crochet hook, or your favorite method.

1. Work 4 rows in garter stitch (knit all stitches on each row)
2. Work chart for a total of 15 repeats (see page 2 for chart)
3. Work 4 rows in garter stitch
4. Bind off all sts knitwise

FINISHING

Steam or wet block to measurements.

Weave in ends.

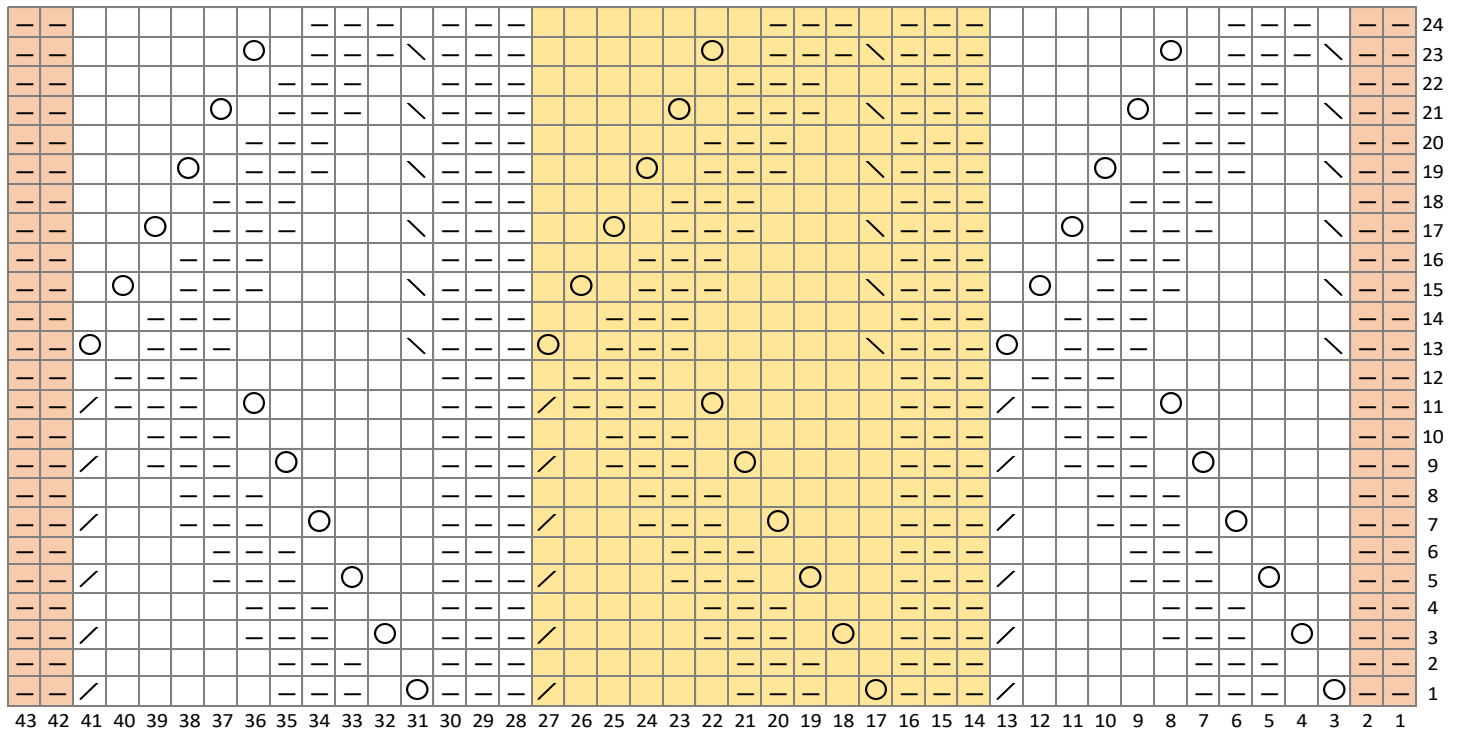
Zoe Scarf

©2018 Jill Szalaj, all rights reserved

www.colornotesyarn.com



CHART



Legend	
	ssk
	k2tog
	yo
	p on RS, k on WS
	garter st border
	pattern repeat

ABBREVIATIONS

*	repeat the instructions between asterisks as many times as directed or repeat from a given set of instructions
"	inches
beg	begin/beginning
CYCA	Craft Yarn Council of America
k	knit
k2tog	knit two stitches together
mm	millimeter
p	purl
rep	repeat
RS	right side
sl1wyif	slip 1 with yarn in front
st(s)	stitch(es)
St st	Stockinette stitch (knit on RS rows, purl on WS rows)
tog	together
WS	wrong side